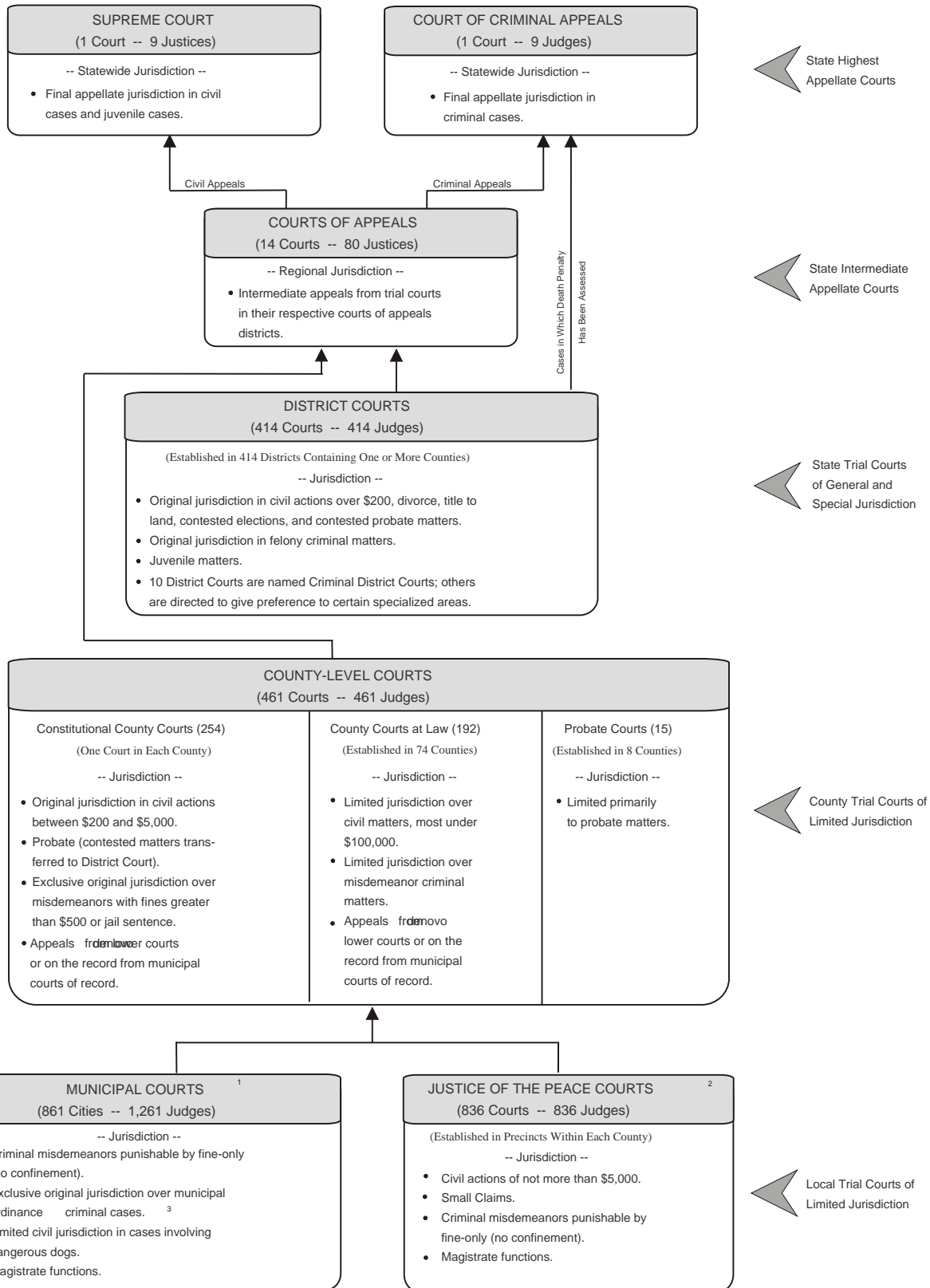


COURT STRUCTURE OF TEXAS

SEPTEMBER 1, 2000



¹ Some Municipal Courts are courts of record -- appeals from those courts are taken on the record to the county-level courts.

² All Justice of the Peace Courts and most Municipal Courts are not courts of record. Appeals from these courts are by trial in the county-level courts, and in some instances in the district courts.

³ An offense that arises under a municipal ordinance is punishable by a fine not to exceed: 1) \$2000 for ordinances that govern fire safety, zoning, and public health; or, 2) \$500 for all others.

OFFICE OF COURT ADMINISTRATION

POST BOX
ATLANTA, TEXAS 75006